

1 of 6



1 Wesley Drive

Heysham, Morecambe, LA3 2BS

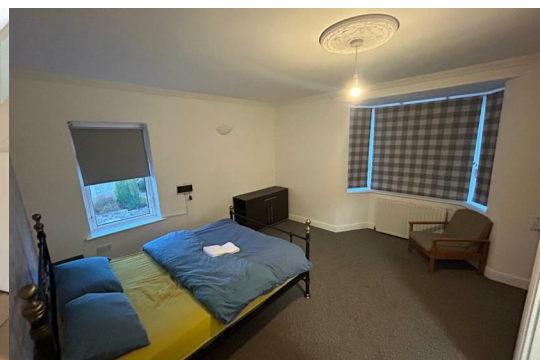
Offers in excess of £320,000



Crown Homes are delighted to offer a fully detached Four (4) Bedroom House in Morecambe Lancaster, Lancashire. The ground floor comprises of spacious front living room, Fully fitted Kitchen, a double bedroom, toilet and shower. Whilst the top floor comprises of an Ensuite master bedroom, two double bedrooms, a single bedroom and contemporary family bathroom with 3 pieces bath tub tiled to the ceiling. The property benefits from Upvc double windows, Central Gas Heating System, Laminated and carpet flooring.

Externally - The property has a low maintenance garden.

Proximity to Morecambe Beach, parks , local stores, Schools.



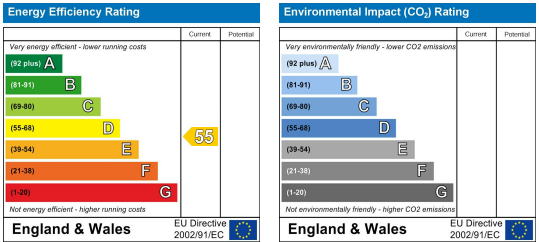
Area Map



Floor Plans



Energy Efficiency Graph



These particulars, whilst believed to be accurate are set out as a general outline only for guidance and do not constitute any part of an offer or contract. Intending purchasers should not rely on them as statements of representation of fact, but must satisfy themselves by inspection or otherwise as to their accuracy. No person in this firms employment has the authority to make or give any representation or warranty in respect of the property.